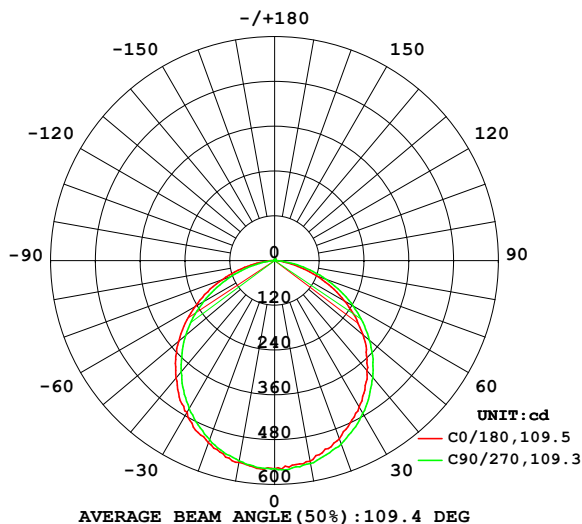


LUMINAIRE PHOTOMETRIC TEST REPORT

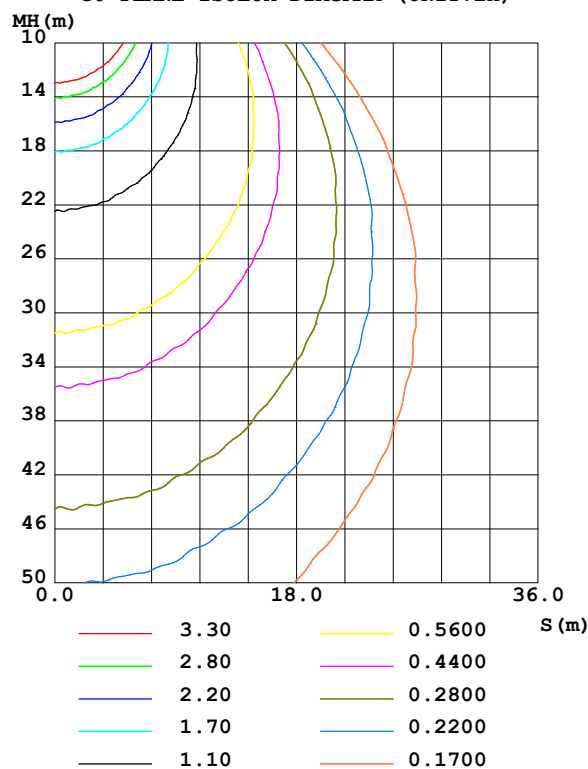
Test:U:230.81V I:0.2319A P:22.401W PF:0.4185 Freq:49.99Hz UTHDi:0.00% ITHDi:0.00% KDisp:0 Lamp Flux:1527.69x1 lm		
NAME: TR3102 20W 3000K	TYPE:	WEIGHT:
SPEC.:	DIM.:	SERIAL No.:
MFR.: VJC Lighting	SUR.: 265	Shielding Angle:

DATA OF LAMP		PHOTOMETRIC DATA Eff: 68.20 lm/W			
MODEL	TR3102 20W 3000K	Imax (cd)	561.4	S/MH(C0/180)	1.26
NOMINAL POWER(W)	22.1	LOR(%)	100.0	S/MH(C90/270)	1.22
RATED VOLTAGE(V)	48	TOTAL FLUX(lm)	1527.7	η UP,DN(C0-180)	0.3,50.6
NOMINAL FLUX(lm)	1527.69	CIE CLASS	DIRECT	η UP,DN(C180-360)	0.4,48.7
LAMPS INSIDE	1	η up (%)	0.7	CIBSE SHR NOM	1.25
TEST VOLTAGE(V)	220	η down (%)	99.3	CIBSE SHR MAX	1.35

LUMINOUS INTENSITY DISTRIBUTION DIAGRAM



C0 PLANE ISOLUX DIAGRAM (UNIT:lx)



C Range: 0 - 360DEG
C Interval: 22.5DEG
Test Speed: HIGH
Temperature:25.3℃
Operators:001
Test Date:2024-04-24

γ Range: 0 - 180DEG
 γ Interval: 1.0DEG
Test System:EVERFINE GO-2000B_V1 SYSTEM V2.00.456
Humidity:65.0%
Test Distance:7.580m [K=1.0000]
Remarks:

ZONAL FLUX DIAGRAM

ZONAL FLUX DIAGRAM:

γ	C0	C45	C90	C135	C180	C225	C270	C315	γ	Φ zone	Φ total	%lum, lamp
10	545.9	543.7	551.8	552.7	549.2	549.3	545.6	544.5	0- 10	52.75	52.75	3.45,3.45
20	508.2	514.0	523.5	523.0	519.8	517.4	510.0	507.5	10- 20	150.4	203.2	13.3,13.3
30	452.6	460.3	472.8	479.3	469.4	467.7	457.8	453.8	20- 30	226.5	429.7	28.1,28.1
40	384.2	395.9	409.5	417.0	411.6	401.9	390.1	384.6	30- 40	271.1	700.8	45.9,45.9
50	309.1	318.0	332.1	341.5	335.1	323.4	310.5	305.0	40- 50	279.0	979.8	64.1,64.1
60	216.1	228.7	243.1	250.7	244.5	232.5	219.2	212.4	50- 60	248.2	1228	80.4,80.4
70	118.8	131.9	146.2	154.9	148.4	137.4	122.6	115.3	60- 70	181.0	1409	92.2,92.2
80	31.60	41.41	53.48	60.74	56.39	44.85	34.35	28.39	70- 80	92.63	1502	98.3,98.3
90	0.4086	0.4399	0.5230	0.6537	0.7833	0.6640	0.7144	0.6915	80- 90	15.59	1517	99.3,99.3
100	0.6708	0.6277	0.5682	0.5635	0.8198	0.9241	1.015	1.026	90-100	0.7063	1518	99.4,99.4
110	1.020	0.9665	0.9139	0.8749	1.208	1.320	1.417	1.435	100-110	1.010	1519	99.4,99.4
120	1.422	1.367	1.321	1.268	1.651	1.739	1.847	1.855	110-120	1.339	1520	99.5,99.5
130	1.844	1.779	1.737	1.670	2.084	2.130	2.250	2.233	120-130	1.574	1522	99.6,99.6
140	2.261	2.204	2.174	2.105	2.468	2.519	2.616	2.604	130-140	1.672	1523	99.7,99.7
150	2.663	2.623	2.590	2.544	2.842	2.872	2.941	2.949	140-150	1.603	1525	99.8,99.8
160	3.047	3.023	3.009	2.964	3.153	3.174	3.232	3.235	150-160	1.351	1526	99.9,99.9
170	3.360	3.340	3.327	3.328	3.440	3.442	3.460	3.463	160-170	0.9189	1527	100,100
180	3.533	3.545	3.521	3.537	3.549	3.538	3.514	3.535	170-180	0.3295	1528	100,100
DEG	LUMINOUS INTENSITY:cd									UNIT:lm		

Conical surface Flux(90deg): 841.65 lm

%lum = 55.1%

%lamp = 55.1%

Conical surface Flux(130deg): 1328.7 lm

%lum = 87.0%

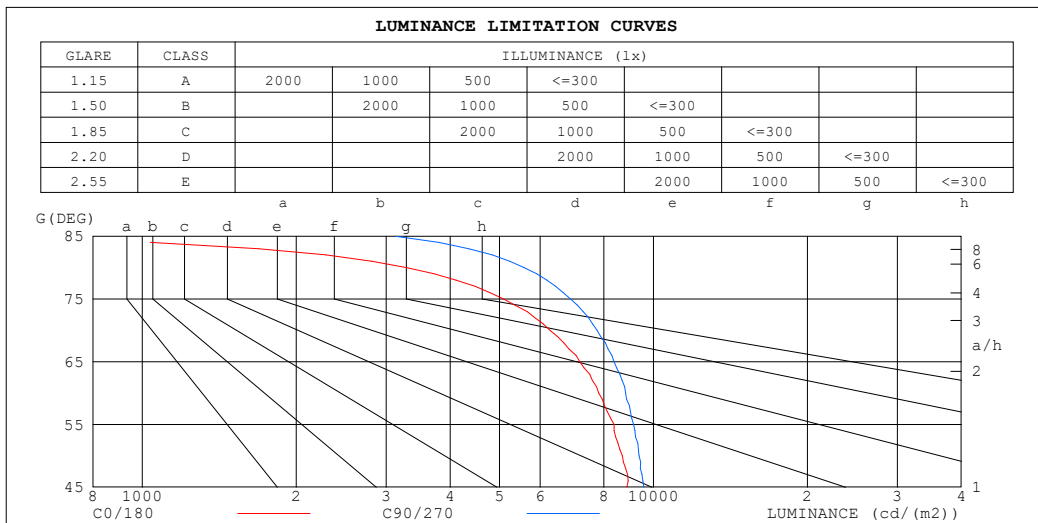
%lamp = 87.0%

C Range: 0 - 360DEG
 C Interval: 22.5DEG
 Test Speed: HIGH
 Temperature:25.3℃
 Operators:001
 Test Date:2024-04-24

γ Range: 0 - 180DEG
 γ Interval: 1.0DEG
 Test System:EVERFINE GO-2000B_V1 SYSTEM V2.00.456
 Humidity:65.0%
 Test Distance:7.580m [K=1.0000]
 Remarks:

LUMINANCE LIMITATION CURVES

Test:U:230.81V I:0.2319A P:22.401W PF:0.4185 Freq:49.99Hz UTHDi:0.00% ITHDi:0.00% KDisp:0 Lamp Flux:1527.69x1 lm		
NAME: TR3102 20W 3000K	TYPE:	WEIGHT:
SPEC.:	DIM.:	SERIAL No.:
MFR.: VJC Lighting	SUR.: 265	Shielding Angle:



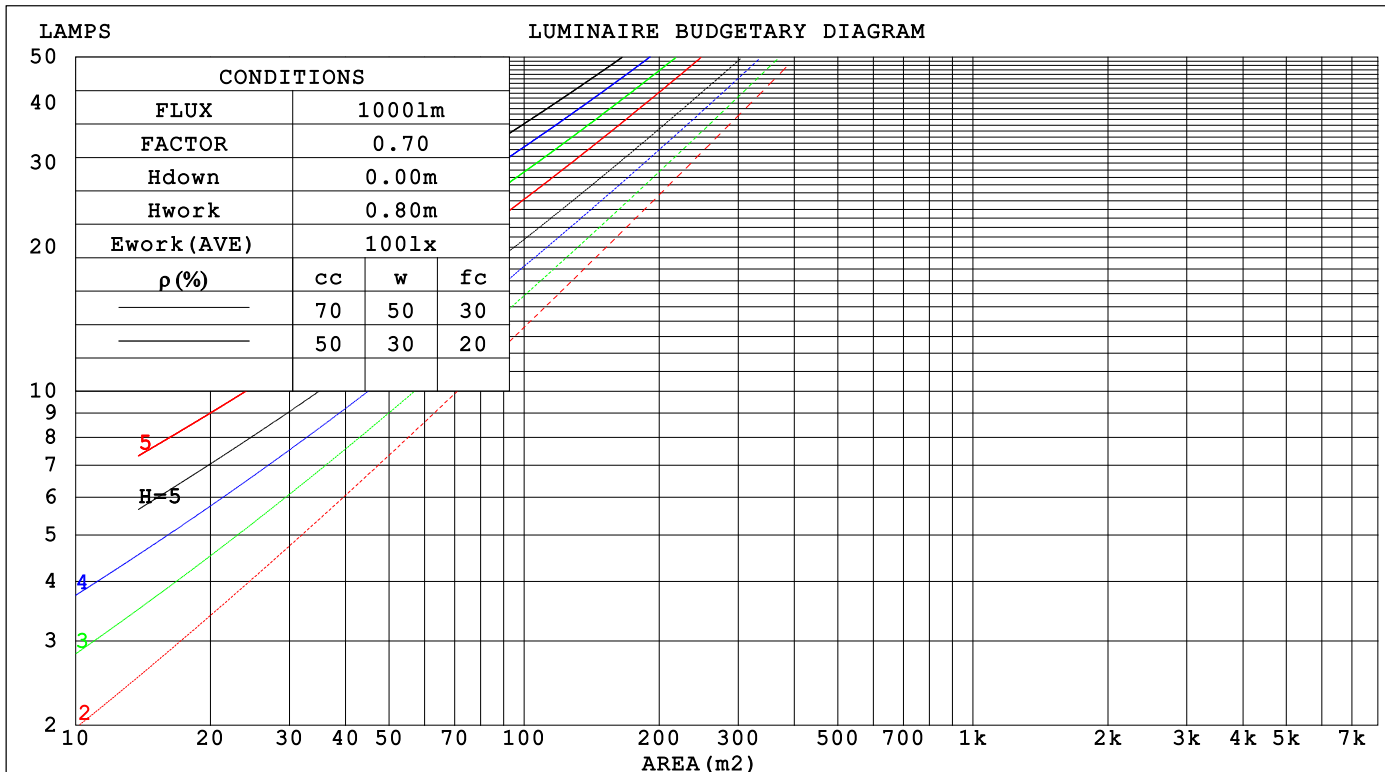
C Range: 0 - 360DEG
C Interval: 22.5DEG
Test Speed: HIGH
Temperature: 25.3°C
Operators: 001
Test Date: 2024-04-24

γ Range: 0 - 180DEG
γ Interval: 1.0DEG
Test System: EVERFINE GO-2000B_V1 SYSTEM V2.00.456
Humidity: 65.0%
Test Distance: 7.580m [K=1.0000]
Remarks:

CU AND LUMINAIRE BUDGETARY ESTIMATE DIAGRAM

Test:U:230.81V I:0.2319A P:22.401W PF:0.4185 Freq:49.99Hz		
UTHDi:0.00% ITHDi:0.00% KDisp:0 Lamp Flux:1527.69x1 lm		
NAME: TR3102 20W 3000K	TYPE:	WEIGHT:
SPEC.:	DIM.:	SERIAL No.:
MFR.: VJC Lighting	SUR.: 265	Shielding Angle:

pcc	80%			70%			50%			30%			10%			0														
pw	50%	30%	10%	50%	30%	10%	50%	30%	10%	50%	30%	10%	50%	30%	10%	0														
pfc	20%			20%			20%			20%			20%			0														
RCR	RCR:Room Cavity Ratio															Coefficients of Utilization(CU)														
0.0	1.19	1.19	1.19	1.16	1.16	1.16	1.11	1.11	1.11	1.06	1.06	1.06	1.01	1.01	1.01	.99														
1.0	1.04	1.00	.97	1.02	.98	.95	.98	.95	.92	.94	.91	.89	.90	.88	.86	.84														
2.0	.91	.85	.79	.89	.83	.78	.86	.81	.76	.82	.78	.74	.79	.76	.73	.70														
3.0	.80	.72	.66	.79	.71	.65	.76	.69	.64	.73	.67	.63	.70	.66	.62	.59														
4.0	.71	.63	.56	.70	.62	.55	.67	.60	.55	.65	.59	.54	.63	.57	.53	.51														
5.0	.64	.55	.48	.62	.54	.48	.60	.53	.47	.58	.52	.47	.56	.51	.46	.44														
6.0	.57	.48	.42	.56	.48	.42	.54	.47	.41	.53	.46	.41	.51	.45	.41	.39														
7.0	.52	.43	.37	.51	.43	.37	.50	.42	.37	.48	.41	.36	.47	.41	.36	.34														
8.0	.47	.39	.33	.47	.39	.33	.45	.38	.33	.44	.37	.33	.43	.37	.32	.30														
9.0	.44	.35	.30	.43	.35	.30	.42	.35	.30	.41	.34	.29	.40	.34	.29	.27														
10.0	.40	.32	.27	.40	.32	.27	.39	.32	.27	.38	.31	.27	.37	.31	.27	.25														



C Range: 0 - 360DEG
C Interval: 22.5DEG
Test Speed: HIGH
Temperature:25.3℃
Operators:001
Test Date:2024-04-24

γ Range: 0 - 180DEG
γ Interval: 1.0DEG
Test System:EVERFINE GO-2000B_V1 SYSTEM V2.00.456
Humidity:65.0%
Test Distance:7.580m [K=1.0000]
Remarks:

WEC AND CCEC

Test:U:230.81V I:0.2319A P:22.401W PF:0.4185 Freq:49.99Hz			UTHDi:0.00% ITHDi:0.00% KDisp:0			Lamp Flux:1527.69x1 lm		
NAME: TR3102 20W 3000K			TYPE:			WEIGHT:		
SPEC.:			DIM.:			SERIAL No.:		
MFR.: VJC Lighting			SUR.: 265			Shielding Angle:		

pcc	80%			70%			50%			30%			10%			0	
pw	50%	30%	10%	50%	30%	10%	50%	30%	10%	50%	30%	10%	50%	30%	10%	0	
pfc	20%			20%			20%			20%			20%			0	
RCR	RCR:Room Cavity Ratio						Wall Exitance Coefficients(WEC)										
0.0																	
1.0	.295	.168	.053	.288	.164	.052	.274	.157	.050	.262	.151	.048	.250	.145	.047		
2.0	.282	.154	.047	.275	.152	.047	.263	.147	.046	.252	.142	.044	.242	.137	.043		
3.0	.263	.140	.042	.257	.138	.041	.247	.134	.041	.237	.130	.040	.228	.126	.039		
4.0	.244	.127	.037	.239	.125	.037	.229	.122	.036	.221	.119	.036	.213	.116	.035		
5.0	.226	.115	.033	.222	.114	.033	.213	.111	.033	.206	.109	.032	.198	.106	.032		
6.0	.210	.105	.030	.206	.104	.030	.199	.102	.030	.192	.100	.029	.185	.098	.029		
7.0	.196	.097	.027	.193	.096	.027	.186	.094	.027	.180	.092	.027	.174	.090	.027		
8.0	.184	.090	.025	.180	.089	.025	.174	.087	.025	.169	.085	.025	.163	.084	.024		
9.0	.172	.083	.023	.169	.083	.023	.164	.081	.023	.159	.080	.023	.154	.078	.023		
10.0	.162	.078	.022	.160	.077	.021	.155	.076	.021	.150	.074	.021	.146	.073	.021		

pcc	80%			70%			50%			30%			10%			0	
pw	50%	30%	10%	50%	30%	10%	50%	30%	10%	50%	30%	10%	50%	30%	10%	0	
pfc	20%			20%			20%			20%			20%			0	
RCR	RCR:Room Cavity Ratio						Ceiling Cavity Exitance Coefficients (CCEC)										
0.0	.196	.196	.196	.167	.167	.167	.114	.114	.114	.066	.066	.066	.021	.021	.021		
1.0	.185	.162	.141	.158	.139	.121	.108	.095	.084	.062	.055	.049	.020	.018	.016		
2.0	.176	.137	.105	.151	.118	.090	.103	.082	.063	.060	.048	.037	.019	.015	.012		
3.0	.168	.120	.081	.144	.103	.070	.099	.072	.049	.057	.042	.029	.018	.014	.009		
4.0	.161	.106	.064	.138	.092	.056	.095	.064	.039	.055	.037	.023	.018	.012	.008		
5.0	.154	.096	.053	.132	.083	.046	.091	.058	.033	.053	.034	.019	.017	.011	.006		
6.0	.147	.087	.045	.126	.076	.039	.087	.053	.028	.050	.031	.016	.016	.010	.005		
7.0	.140	.081	.039	.120	.070	.034	.083	.049	.024	.048	.029	.014	.016	.009	.005		
8.0	.133	.075	.034	.115	.065	.030	.080	.046	.021	.046	.027	.013	.015	.009	.004		
9.0	.127	.070	.031	.110	.061	.027	.076	.043	.019	.044	.025	.011	.014	.008	.004		
10.0	.122	.066	.028	.105	.057	.024	.073	.040	.017	.043	.024	.010	.014	.008	.003		

C Range: 0 - 360DEG
C Interval: 22.5DEG
Test Speed: HIGH
Temperature:25.3℃
Operators:001
Test Date:2024-04-24

γ Range: 0 - 180DEG
γ Interval: 1.0DEG
Test System:EVERFINE GO-2000B_V1 SYSTEM V2.00.456
Humidity:65.0%
Test Distance:7.580m [K=1.0000]
Remarks:

UGR(Unified Glare Rating) Table

Test:U:230.81V I:0.2319A P:22.401W PF:0.4185 Freq:49.99Hz UTHDi:0.00% ITHDi:0.00% KDisp:0 Lamp Flux:1527.69x1 lm										
NAME: TR3102 20W 3000K						TYPE:		WEIGHT:		
SPEC.:						DIM.:		SERIAL No.:		
MFR.: VJC Lighting						SUR.: 265		Shielding Angle:		
ceiling/cavity	0.7	0.7	0.5	0.5	0.3	0.7	0.7	0.5	0.5	0.3
walls	0.5	0.3	0.5	0.3	0.3	0.5	0.3	0.5	0.3	0.3
working plane	0.2	0.2	0.2	0.2	0.2	0.2	0.2	0.2	0.2	0.2
Room dimensions	Viewed crosswise					Viewed endwise				
x = 2H y = 2H	18.7	20.1	18.9	20.4	20.6	19.1	20.6	19.4	20.8	21.0
3H	19.9	21.3	20.2	21.5	21.8	20.5	21.9	20.8	22.1	22.4
4H	20.3	21.6	20.6	21.8	22.1	21.1	22.4	21.4	22.6	22.9
6H	20.4	21.7	20.8	21.9	22.2	21.4	22.6	21.7	22.9	23.2
8H	20.4	21.6	20.8	21.9	22.2	21.4	22.6	21.8	22.9	23.2
12H	20.4	21.5	20.7	21.8	22.1	21.4	22.6	21.8	22.9	23.2
4H 2H	19.3	20.6	19.6	20.8	21.1	19.6	20.9	19.9	21.2	21.4
3H	20.7	21.8	21.0	22.1	22.4	21.2	22.3	21.6	22.6	23.0
4H	21.1	22.2	21.5	22.5	22.9	21.8	22.9	22.2	23.2	23.6
6H	21.4	22.3	21.8	22.7	23.0	22.3	23.2	22.7	23.5	23.9
8H	21.4	22.2	21.8	22.6	23.0	22.4	23.2	22.8	23.6	24.0
12H	21.4	22.1	21.8	22.5	23.0	22.4	23.2	22.8	23.6	24.0
8H 4H	21.4	22.2	21.8	22.6	23.0	22.0	22.8	22.4	23.2	23.6
6H	21.7	22.4	22.1	22.8	23.2	22.5	23.2	23.0	23.6	24.1
8H	21.7	22.4	22.2	22.8	23.3	22.7	23.3	23.1	23.7	24.2
12H	21.7	22.2	22.2	22.7	23.2	22.7	23.3	23.2	23.7	24.2
12H 4H	21.4	22.1	21.8	22.5	22.9	22.0	22.7	22.4	23.1	23.6
6H	21.7	22.3	22.2	22.8	23.2	22.5	23.1	23.0	23.6	24.0
8H	21.8	22.3	22.2	22.8	23.2	22.7	23.2	23.2	23.7	24.2
Variations with the observer position at spacings(CIE Pub.117):										
S = 1.0H	+ 0.2 / - 0.3					+ 0.2 / - 0.2				
1.5H	+ 0.2 / - 0.4					+ 0.2 / - 0.3				
2.0H	+ 0.3 / - 0.4					+ 0.3 / - 0.3				

CIE Pub.117, 1528 lm Total Lamp Luminous Flux Correct (8log(F/F0) = 1.5)
Area: 0.055126 m2

C Range: 0 - 360DEG
C Interval: 22.5DEG
Test Speed: HIGH
Temperature:25.3℃
Operators:001
Test Date:2024-04-24

γ Range: 0 - 180DEG
γ Interval: 1.0DEG
Test System:EVERFINE GO-2000B_V1 SYSTEM V2.00.456
Humidity:65.0%
Test Distance:7.580m [K=1.0000]
Remarks:

UTILIZATION FACTORS TABLE

Test:U:230.81V I:0.2319A P:22.401W PF:0.4185 Freq:49.99Hz		
UTHDi:0.00% ITHDi:0.00% KDisp:0 Lamp Flux:1527.69x1 lm		
NAME: TR3102 20W 3000K	TYPE:	WEIGHT:
SPEC.:	DIM.:	SERIAL No.:
MFR.: VJC Lighting	SUR.: 265	Shielding Angle:

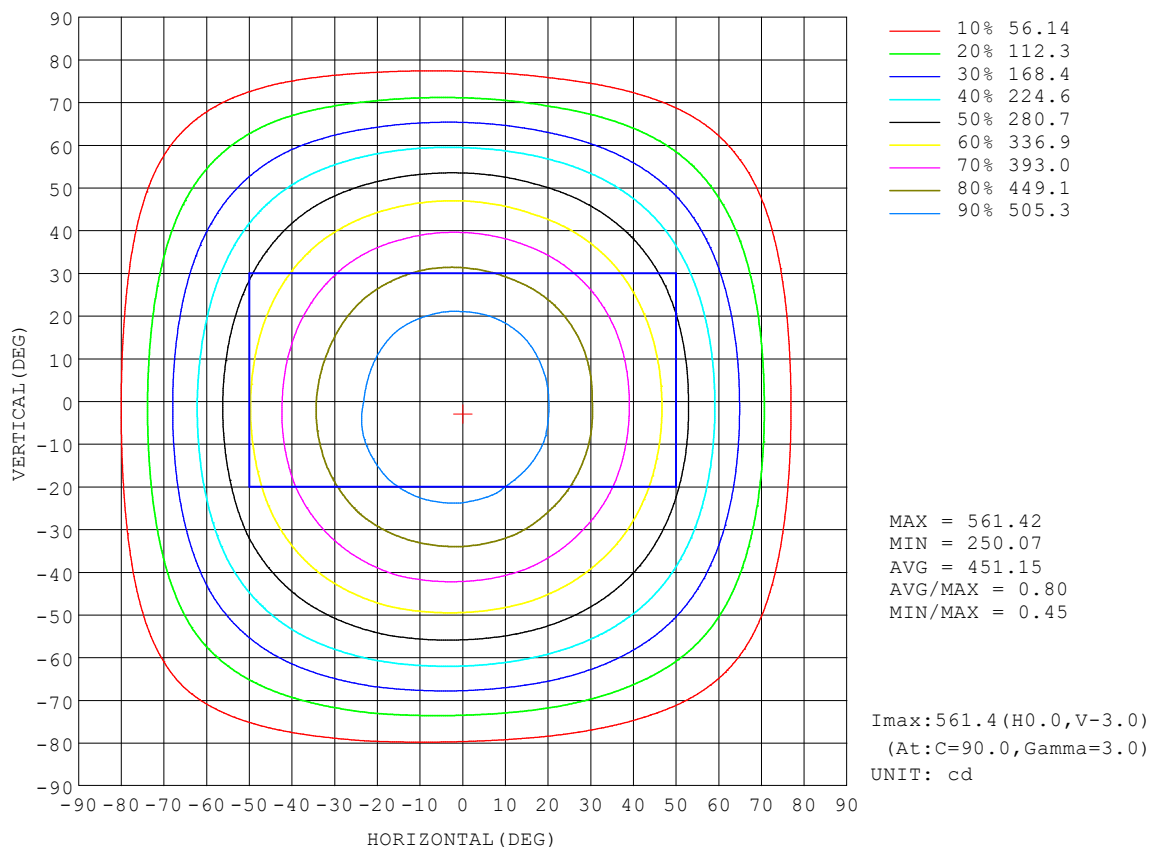
REFLECTANCE										
Ceiling	0.8	0.8	0.8	0.7	0.7	0.7	0.5	0.5	0.5	0
Walls	0.7	0.5	0.3	0.7	0.5	0.3	0.7	0.5	0.3	0
Working plane	0.2	0.2	0.2	0.2	0.2	0.2	0.2	0.2	0.2	0
ROOM INDEX	UTILIZATION FACTORS (PERCENT) $k(RI) \times RCR = 5$									
$k = 0.60$	58	47	40	57	46	40	56	46	39	33
0.80	68	57	50	67	56	49	65	56	49	42
1.00	77	66	59	76	65	58	73	67	58	51
1.25	84	74	67	82	73	66	80	71	65	58
1.50	89	79	72	87	78	72	84	76	71	63
2.00	96	87	81	94	86	80	90	84	79	71
2.50	99	92	86	97	91	85	94	88	83	75
3.00	103	96	91	101	95	90	96	92	87	79
4.00	107	101	97	104	99	95	100	96	93	84
5.00	109	104	101	107	102	99	102	99	96	87
ROOM INDEX	UF (total)									Direct
According to DIN EN 13032-2 2004			Suspended					SHRNOM = 1.25		

C Range: 0 - 360DEG
C Interval: 22.5DEG
Test Speed: HIGH
Temperature: 25.3 °C
Operators: 001
Test Date: 2024-04-24

γ Range: 0 - 180DEG
γ Interval: 1.0DEG
Test System: EVERFINE GO-2000B_V1 SYSTEM V2.00.456
Humidity: 65.0%
Test Distance: 7.580m [K=1.0000]
Remarks:

ISOCANDELA DIAGRAM

Test:U:230.81V I:0.2319A P:22.401W PF:0.4185 Freq:49.99Hz UTHDi:0.00% ITHDi:0.00% KDisp:0 Lamp Flux:1527.69x1 lm		
NAME: TR3102 20W 3000K	TYPE:	WEIGHT:
SPEC.:	DIM.:	SERIAL No.:
MFR.: VJC Lighting	SUR.: 265	Shielding Angle:

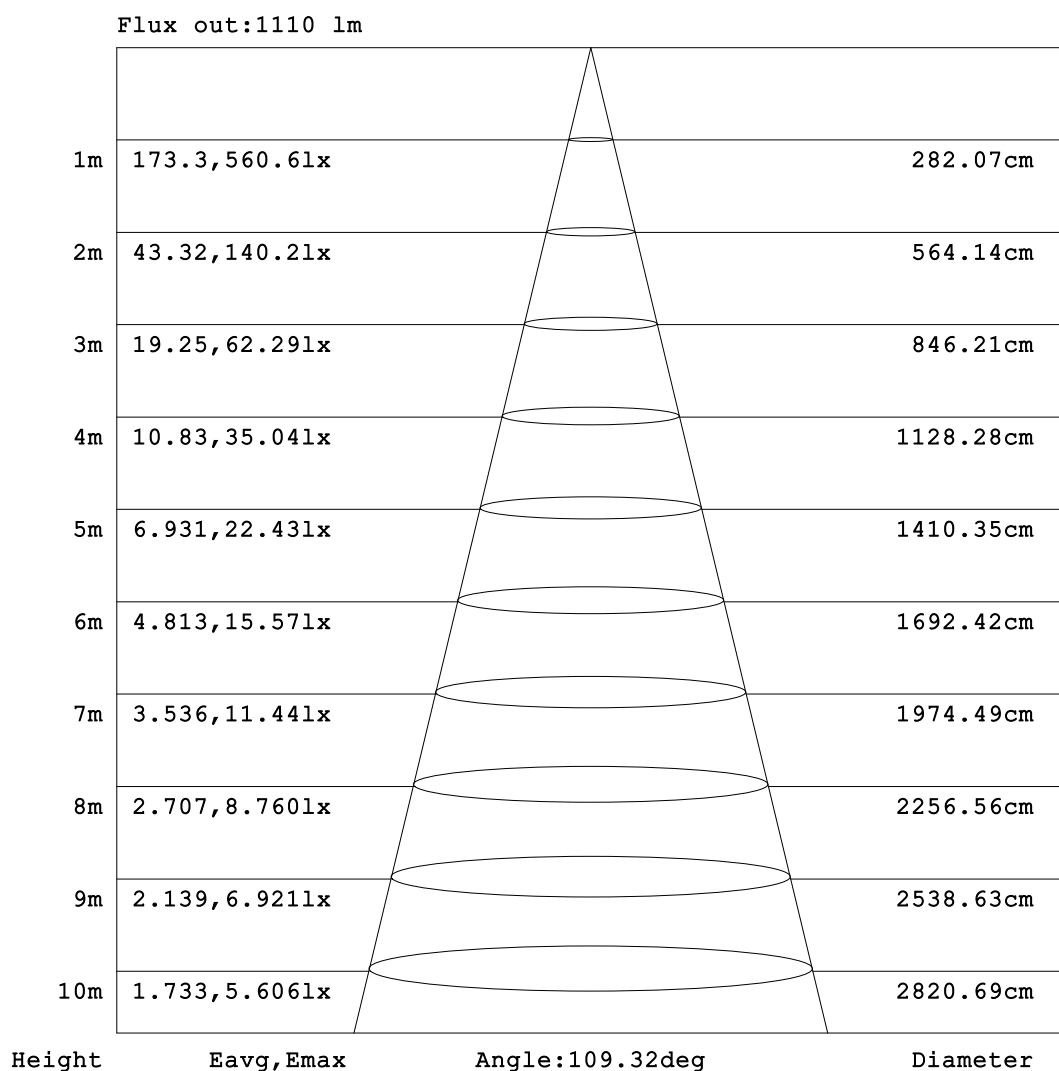


C Range: 0 - 360DEG
C Interval: 22.5DEG
Test Speed: HIGH
Temperature: 25.3°C
Operators: 001
Test Date: 2024-04-24

γ Range: 0 - 180DEG
γ Interval: 1.0DEG
Test System: EVERFINE GO-2000B_V1 SYSTEM V2.00.456
Humidity: 65.0%
Test Distance: 7.580m [K=1.0000]
Remarks:

AAI Figure

Test:U:230.81V I:0.2319A P:22.401W PF:0.4185 Freq:49.99Hz UTHDi:0.00% ITHDi:0.00% KDisp:0 Lamp Flux:1527.69x1 lm		
NAME: TR3102 20W 3000K	TYPE:	WEIGHT:
SPEC.:	DIM.:	SERIAL No.:
MFR.: VJC Lighting	SUR.: 265	Shielding Angle:



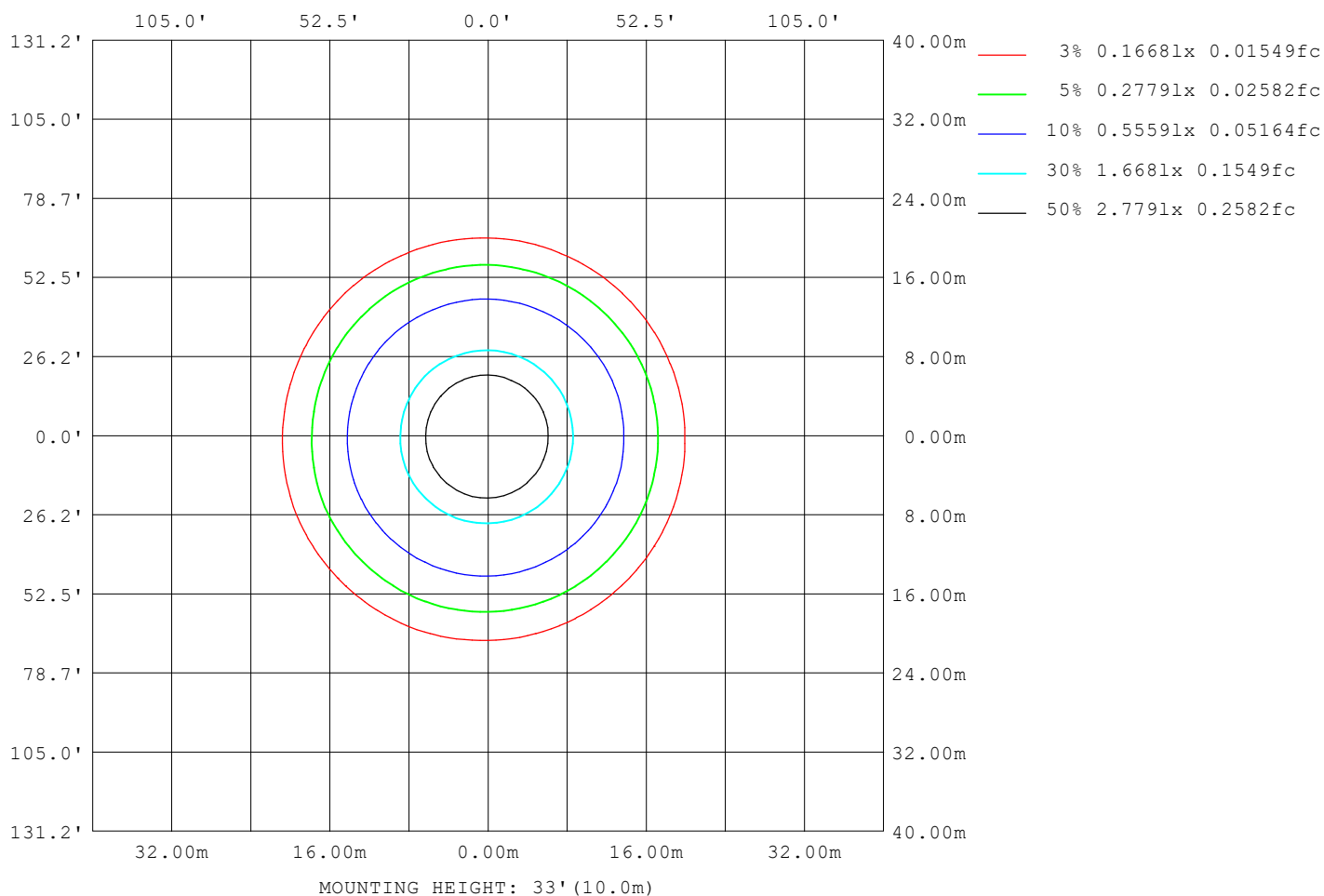
Note: The Curves indicate the illuminated area and the average illumination when the luminaire is at different distance.

C Range: 0 - 360DEG
C Interval: 22.5DEG
Test Speed: HIGH
Temperature: 25.3°C
Operators: 001
Test Date: 2024-04-24

γ Range: 0 - 180DEG
γ Interval: 1.0DEG
Test System: EVERFINE GO-2000B_V1 SYSTEM V2.00.456
Humidity: 65.0%
Test Distance: 7.580m [K=1.0000]
Remarks:

ISOLUX DIAGRAM

Test: U:230.81V I:0.2319A P:22.401W PF:0.4185 Freq:49.99Hz UTHDi: 0.00% ITHDi: 0.00% KDisp: 0 Lamp Flux: 1527.69x1 lm		
NAME: TR3102 20W 3000K	TYPE:	WEIGHT:
SPEC.:	DIM.:	SERIAL No.:
MFR.: VJC Lighting	SUR.: 265	Shielding Angle:



C Range: 0 - 360DEG
 C Interval: 22.5DEG
 Test Speed: HIGH
 Temperature: 25.3°C
 Operators: 001
 Test Date: 2024-04-24

γ Range: 0 - 180DEG
 γ Interval: 1.0DEG
 Test System: EVERFINE GO-2000B_V1 SYSTEM V2.00.456
 Humidity: 65.0%
 Test Distance: 7.580m [K=1.0000]
 Remarks:

LED Avg.L Report

Test:U:230.81V I:0.2319A P:22.401W PF:0.4185 Freq:49.99Hz UTHDi:0.00% ITHDi:0.00% KDisp:0 Lamp Flux:1527.69x1 lm		
NAME: TR3102 20W 3000K	TYPE:	WEIGHT:
SPEC.:	DIM.:	SERIAL No.:
MFR.: VJC Lighting	SUR.: 265	Shielding Angle:

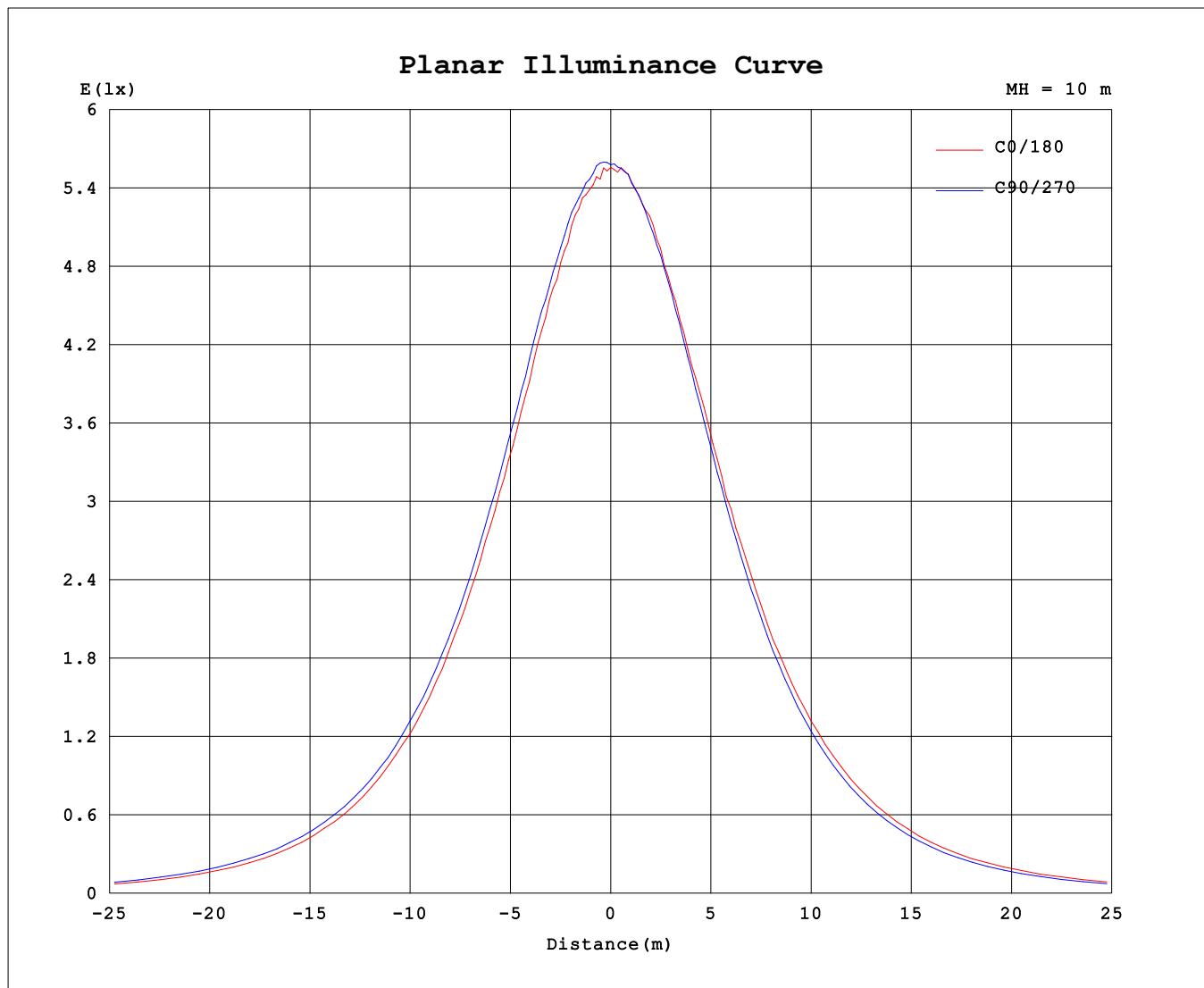
AvgL	cd/m2
L_0~180 (65) av	7835
L_0~180 (75) av	6125
L_0~180 (85) av	2068
L_90~270 (65) av	7874
L_90~270 (75) av	6103
L_90~270 (85) av	1896
L_45 (65) av	7861
L_45 (75) av	6123
L_45 (85) av	1999

Standard: GB/T 29293-2012

C Range: 0 - 360DEG
C Interval: 22.5DEG
Test Speed: HIGH
Temperature:25.3℃
Operators:001
Test Date:2024-04-24

γ Range: 0 - 180DEG
γ Interval: 1.0DEG
Test System:EVERFINE GO-2000B_V1 SYSTEM V2.00.456
Humidity:65.0%
Test Distance:7.580m [K=1.0000]
Remarks:

Planar Illuminance Curve



C Range: 0 - 360DEG
C Interval: 22.5DEG
Test Speed: HIGH
Temperature: 25.3 °C
Operators: 001
Test Date: 2024-04-24

γ Range: 0 - 180DEG
 γ Interval: 1.0DEG
Test System: EVERFINE GO-2000B_V1 SYSTEM V2.00.456
Humidity: 65.0%
Test Distance: 7.580m [K=1.0000]
Remarks:

LUMINOUS DISTRIBUTION INTENSITY DATA

Test:U:230.81V I:0.2319A P:22.401W PF:0.4185 Freq:49.99Hz		
UTHDi:0.00% ITHDi:0.00% KDisp:0 Lamp Flux:1527.69x1 lm		
NAME: TR3102 20W 3000K	TYPE:	WEIGHT:
SPEC.:	DIM.:	SERIAL No.:
MFR.: VJC Lighting	SUR.: 265	Shielding Angle:

Table--1

UNIT: cd

C (DEG) γ (DEG)	0	22.5	45	67.5	90	112.5	135	157.5	180	202.5	225	247.5	270	292.5	315	337.5			
0	558	558	558	558	558	558	558	558	558	558	558	558	558	558	558	558			
5	550	553	555	558	557	557	558	558	559	554	555	555	557	554	555	553			
10	546	545	544	550	552	553	553	550	549	555	549	548	546	542	544	539			
15	524	531	532	534	538	541	541	540	535	537	536	534	531	526	527	527			
20	508	509	514	520	523	522	523	524	520	517	517	513	510	507	508	503			
25	480	487	489	497	499	502	505	501	502	498	493	490	486	482	481	482			
30	453	458	460	469	473	477	479	474	469	467	468	462	458	453	454	451			
35	423	426	430	438	442	445	450	446	446	440	437	429	425	421	420	418			
40	384	392	396	405	410	413	417	415	412	405	402	394	390	384	385	384			
45	347	355	359	367	373	378	380	377	375	369	363	356	351	346	346	344			
50	309	313	318	326	332	338	341	338	335	330	323	316	310	306	305	304			
55	266	271	276	284	289	294	299	297	292	286	280	272	267	260	260	261			
60	216	223	229	238	243	248	251	251	245	239	233	226	219	213	212	213			
65	168	175	181	190	195	201	203	203	197	192	185	177	172	165	164	163			
70	119	126	132	141	146	153	155	154	148	143	137	128	123	116	115	115			
75	72.9	79.2	84.6	92.9	98.2	104	106	106	102	94.7	89.8	81.7	75.9	69.9	68.9	68.9			
80	31.6	36.8	41.4	48.5	53.5	58.9	60.7	61.0	56.4	49.6	44.8	38.9	34.3	29.4	28.4	28.1			
85	1.93	4.60	7.06	11.4	15.0	19.2	21.0	21.7	17.9	11.9	9.18	5.72	3.20	1.32	1.15	1.14			
90	0.41	0.43	0.44	0.45	0.52	0.61	0.65	0.67	0.78	0.74	0.66	0.67	0.71	0.69	0.69	0.65			
95	0.53	0.56	0.53	0.50	0.46	0.47	0.45	0.47	0.67	0.69	0.76	0.78	0.84	0.83	0.84	0.79			
100	0.67	0.70	0.63	0.62	0.57	0.57	0.56	0.60	0.82	0.85	0.92	0.96	1.01	1.01	1.03	0.98			
105	0.83	0.83	0.78	0.77	0.73	0.73	0.71	0.74	1.01	1.04	1.12	1.15	1.21	1.20	1.23	1.17			
110	1.02	1.04	0.97	0.96	0.91	0.90	0.87	0.89	1.21	1.25	1.32	1.36	1.42	1.41	1.43	1.36			
115	1.22	1.25	1.16	1.16	1.11	1.10	1.07	1.09	1.43	1.44	1.53	1.58	1.63	1.63	1.65	1.58			
120	1.42	1.43	1.37	1.36	1.32	1.30	1.27	1.28	1.65	1.66	1.74	1.79	1.85	1.84	1.86	1.80			
125	1.63	1.62	1.57	1.56	1.52	1.50	1.47	1.48	1.87	1.88	1.94	1.98	2.03	2.02	2.04	2.01			
130	1.84	1.83	1.78	1.77	1.74	1.70	1.67	1.69	2.08	2.09	2.13	2.19	2.25	2.23	2.23	2.21			
135	2.05	2.03	1.99	1.99	1.96	1.92	1.89	1.90	2.28	2.28	2.32	2.37	2.43	2.41	2.43	2.40			
140	2.26	2.25	2.20	2.20	2.17	2.14	2.10	2.13	2.47	2.48	2.52	2.55	2.62	2.59	2.60	2.58			
145	2.46	2.45	2.41	2.41	2.39	2.35	2.32	2.34	2.68	2.67	2.69	2.74	2.78	2.76	2.78	2.75			
150	2.66	2.66	2.62	2.62	2.59	2.56	2.54	2.55	2.84	2.84	2.87	2.90	2.94	2.92	2.95	2.92			
155	2.86	2.85	2.84	2.84	2.80	2.78	2.76	2.77	3.01	3.02	3.03	3.06	3.09	3.07	3.09	3.07			
160	3.05	3.06	3.02	3.04	3.01	2.99	2.96	2.99	3.15	3.16	3.17	3.20	3.23	3.22	3.24	3.21			
165	3.23	3.22	3.21	3.21	3.17	3.16	3.15	3.16	3.31	3.31	3.32	3.34	3.35	3.34	3.36	3.34			
170	3.36	3.35	3.34	3.37	3.33	3.32	3.33	3.33	3.44	3.43	3.44	3.44	3.46	3.44	3.46	3.44			
175	3.47	3.45	3.46	3.47	3.43	3.44	3.45	3.45	3.52	3.51	3.52	3.51	3.51	3.51	3.52	3.50			
180	3.53	3.52	3.54	3.53	3.52	3.52	3.54	3.51	3.55	3.53	3.54	3.53	3.51	3.52	3.54	3.51			

C Range: 0 - 360DEG

C Interval: 22.5DEG

Test Speed: HIGH

Temperature:25.3℃

Operators:001

Test Date:2024-04-24

γ Range: 0 - 180DEG

γ Interval: 1.0DEG

Test System:EVERFINE GO-2000B_V1 SYSTEM V2.00.456

Humidity:65.0%

Test Distance:7.580m [K=1.0000]

Remarks: